


Chalet Black Pearl



REFERENCE	13554
TOWN	Val d'Isere
BEDROOMS	5 
SLEEPS	10 

DESCRIPTION

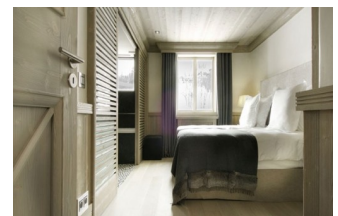
The exquisite Chalet Black Pearl is spread over 3 floors and ideally situated between the village of Val d'Isere, just a 10 minute walk away, and the Funival funicular in La Daille. Black Pearl's chauffeured minibus (shared with White Pearl) can whisk you into town or directly to the lifts in less than a minute! Equally the chalet is perfectly placed to take full advantage of the free bus service which serves the entire resort, with stops just a short distance from the chalet. Built by Philippe Capezzone, owner and designer of the 5* Hotel

ACTIVITIES INCLUDE

Skiing

LOCATION

Mountains



Chalet Black Pearl

