

# Chateau de la Motte

Air Con, Fenced Pool



<b>REFERENCE</b>	13894
<b>TOWN</b>	La Motte
<b>FROM</b>	€4740 / week
<b>TO</b>	€8000 / week
<b>BEDROOMS</b>	7 
<b>BATHROOMS</b>	6 
<b>SLEEPS</b>	14 

## DESCRIPTION

Chateau de la Motte is a sumptuous property with 7 air-conditioned bedrooms each with its private ensuite bathroom, and large flat screen television. There's a spacious family kitchen which is fully equipped for guests to prepare al fresco family lunches and dinners. There is a large living room with dining area and French windows that open directly onto the terrace and gardens. The bedrooms are on several floors and are tastefully decorated in a true Provencal style. From each bedroom you have a different view of the surrounding



## FEATURES

Pool, 15m by 5m , Fenced, Alarmed

Parking for 4 cars

Gas BBQ

## ACTIVITIES INCLUDE

Cycling, Fishing Trips, Hiking

## LOCATION

Rural

## NEAREST TOWN

Draguignan (16 km)

## NEAREST AIRPORT

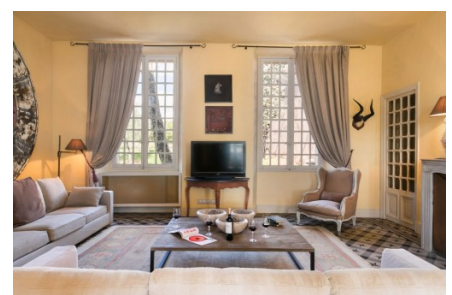
Nice International Airport (77 km)

## NEAREST VILLAGE

La Motte (4 km)

## NEAREST BEACH

Frejus (20 km)



# Chateau de la Motte

